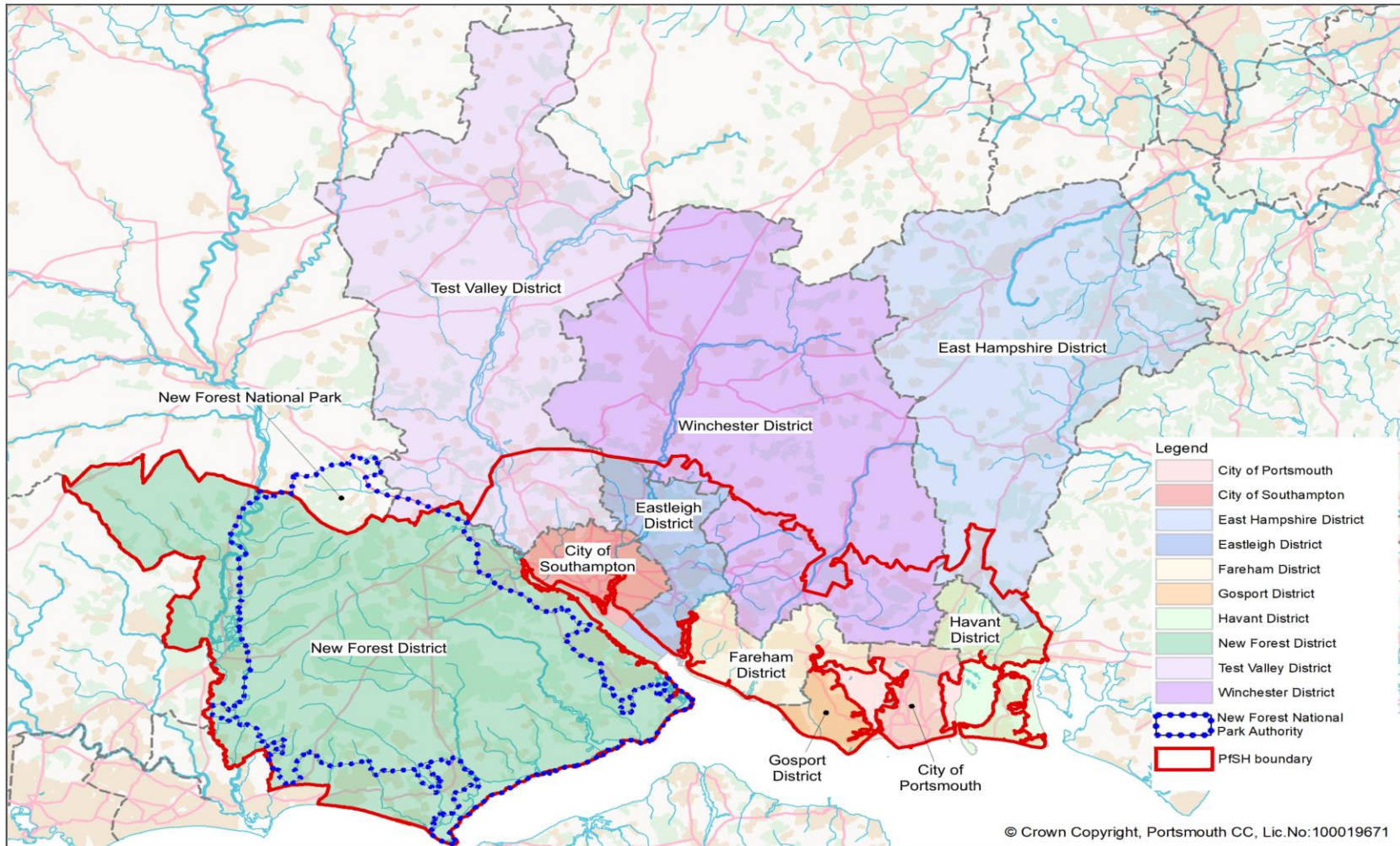




GREENPRINT FOR SOUTH HAMPSHIRE

“A MORE PROSPEROUS, FAIR, RESILIENT AND ENVIRONMENTALLY AWARE SOCIETY”

THE 'WHERE' – SOUTH HAMPSHIRE



THE 'WHY' AND THE 'WHAT'

- A desire to emerge from Covid-19 with a different perspective, and to capture what we've learnt – economy + environment + society
- Identifying the aims and aspirations we share, and where there's potential for collaboration
- A joint initiative: Green Halo Partnership, Universities of Portsmouth & Southampton, Southern Policy Centre
- Working through PfSH – a long standing central South Partnership
- Not a new set of policies and plans...
- ... but a framework for policy-making, collaboration and co-operation

WORK TO DATE

- Reviewed key policy documents:
 - How do we define green recovery?
 - What are common policy themes?
 - Where is there the potential for collaboration?
 - What is it makes our region distinctive?
- Shaped some draft principles and conducted a series of interviews
- Drafted a framework for members to discuss
- Begun to develop and build ownership

POLICY THEMES OF GREEN RECOVERY: LONG LIST

- Zero-carbon economy
- Cutting pollution, reducing emissions
- Greener, digitally connected communities
- Strong and inclusive communities
- Biodiversity and natural capital
- Green infrastructure initiatives
- Developing affordable and efficient housing
- Addressing health and skills inequalities
- Urgent leadership on green issues
- Sustainability and renewable energy
- Climate change mitigation and adaptation
- Viable imports and procurement
- Maintaining natural public spaces
- Conservation to protect wildlife
- Encouraging behavioural change
- Addressing the COVID-19 challenge
- Sustainable job creation and construction
- Support strategic green investments
- Waste and recycling management
- Water efficiency and conservation

DISTINCTIVENESS OF OUR REGION

-
- Renowned coastline, national parks and rich biodiversity proximate to heavily populated urban areas
 - Prosperous region with excellent educational institutions and resource hubs
 - Capacity for rural to urban connectivity and nature-based solutions
 - Ambitious housing development targets and flagship eco-projects
 - Long-term vision for climate resilience, collaborating with SMEs and big industry

... and what makes our region is the **combination** of these characteristics

- **Net zero with nature** – providing the leadership necessary to reduce carbon emissions... and build zero carbon economy and communities
- **Natural health service** – improving physical and mental health and wellbeing and tackling health inequalities through greater access to our world class natural environments
- **World class blue/green environments** – protecting, restoring and improving our distinctive environments, enabling their ecosystem services to contribute to a strong economy and a healthy, inclusive society
- **Creating great places through quality in design and build** – encouraging an innovative approach to creating high quality, inclusive and sustainable places for people and nature
- **Centre for excellence in green skills and jobs** – tackle local skills gaps and economic inequalities by building a future workforce which can seize the opportunities offered by innovation in key sectors of our economy

OUR GREENPRINT FRAMEWORK: FIVE PROPOSED PRIORITIES

A tool for 'testing' our policies

Net zero with
nature

Natural
health
service

World-class
green/blue
environments

Creating
great places
through
quality in
design and
build

Centre of
excellence for
green skills
and jobs

Example Projects

Technology South

- Innovation South
- Greentech South
- Low Carbon Solent
- Centre for Enzyme Innovation

New Development

- Fawley Waterside
- Welborne
- One Horton Heath
- Tipner West

National Parks and Public Health

- Working Woodlands
- Nature Health Network
- PHE Accord
- Wild Play Sites

Green Skills and Training

- Woolston's Silicon Wharf
- Langstone Technology Park
- Dunsbury Park

Clean Air

- Charging Clean Air Zone
- Air Quality Management Area

✓

✓

✓

✓

✓

✓

✓

✓

✓

✓

✓

✓

✓

✓

✓

✓

✓

✓

PARTNERS



Hampshire
County Council



Solent
Transport



FUTURE SOUTH

CREATING A ZERO CARBON ECONOMY



biotecture
sustainable living walls



FAWLEY
WATERSIDE

**SUSTAINABLE
& SOCIAL**

southern coop



NEW FOREST
NATIONAL PARK



**UNIVERSITY OF
PORTSMOUTH**



GREENTECH SOUTH

THE TECHNOLOGY AND INNOVATION CLUSTER

UNIVERSITY OF
Southampton



Hampshire & Isle of Wight
Wildlife Trust



**ISLE of
WIGHT**
COUNCIL



EASTLEIGH
BOROUGH COUNCIL



**SOLENT
LOCAL
ENTERPRISE
PARTNERSHIP**



Portsmouth
CITY COUNCIL

**Southern
Policy Centre**



**BIRD AWARE
SOLENT**